

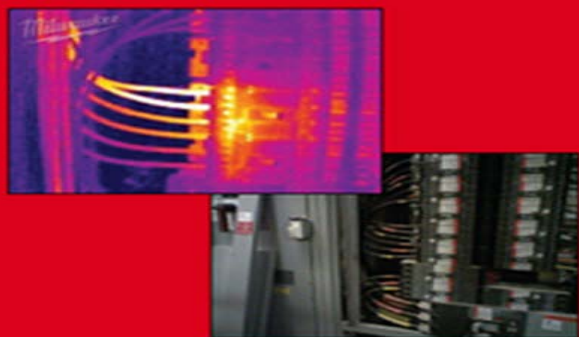
FASTER

**MORE
VERSATILE**

**EASIER
TO USE**



Capture Thermal and Visual images on every trigger pull for enhanced reporting



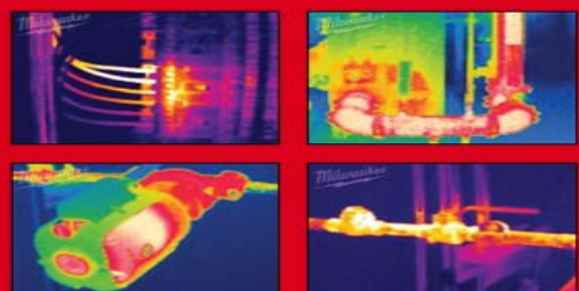
FASTER

**MORE
VERSATILE**

**EASIER
TO USE**



**Crisp, high resolution
160x120 pixel Thermal
images for better definition
and clarity**



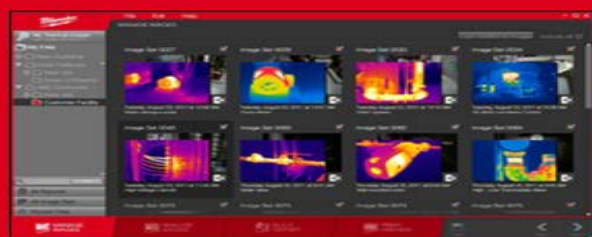
FASTER

**MORE
VERSATILE**

**EASIER
TO USE**



**Complete report software to
easily analyze images**



M12™ 160X120 THERMAL IMAGER



Resolution	160 x 120 pixels
Temp Range	14 to 662°F (-10 to 350°C)
Visual Camera?	YES
Thermal / Visual Display	Thermal or Visual, Toggle Hotkey
LED Flashlight	YES
Display Type / Size	3.5" Color LCD (640 x 480)
Screen Refresh Rate	60 times per second
Adjustable Emissivity on Imager	YES
Battery Charge Time	30 minutes
Battery Life	> 4 Hours
Image Storage	2GB SD Card. Upgradeable to 32GB SD
Temp Accuracy	2%
Thermal Sensitivity	0.1°C at 30°C
Minimum focus distance	4 inches
Focus Method	Manual focus ring
Color Palettes	Iron, Rainbow and Gray
Auto Ranging	YES
Manual Ranging	Yes, scaling with level and span
Auto Battery Off	After 5 minutes, the LCD will turn off. After 20 minutes, the entire Thermal Imager will turn off.
2 Meter Drop Test	YES
IP Ratings	IP54
Field of View	25° x 19°
External Software	Yes. The Milwaukee Thermal Imager Report Software provides analysis and reporting functionality. Compatible with Windows 7, Vista and XP.
Thermal Imager Report Software file format	Export images in jpeg format. Reports are downloaded as pdf files.
Carrying Case	Yes, a hard carrying case lined with rigid foam for increased protection.
USB Cable	YES
SD Card Reader	YES
Battery / Charger	(1) M12™ RED LITHIUM™ Battery Pack & 30 Minute Charger
Manuals	Yes, Tool and Software
Languages Supported	English, Spanish, French
NIST Calibration Certificate	Available
Tool Warranty	5 Year
Recommended Calibration Cycle	1 year
Standard Equipment	2260-20 M12™ 160x120 Thermal Imager, Thermal Imager Report Software, 2GB SD Card, USB Cable, M12™ RED LITHIUM™ Battery Pack, 30 Minute Charger, SD Card Reader, Carrying Case, Thermal Imager Manual, Software Manual, Quick Reference Guide, Statement of Calibration